

Introduction on A32i Paging System

Version: V1.0

Release Date: 8th,Dec,2021

Catalog

Introduction on A32i Broadcast System	1
1. Introduction.....	1
1. 1. Overview.....	1
1. 2. Applicable Model.....	1
1. 3. How the A32i Broadcast System works.....	1
1. 4. Example of A32i Broadcast System use.....	2
1. 5. Before You Start	3
1. 6. Connection Diagram.....	3
2. Operation Guide.....	5
2. 1. Setup SIP hotspot on A32i Phone	5
2. 2. Setup SIP hotspot on Broadcast Receivers.....	6
2. 3. Activate SIP hotspot clients and call service on A32i phone	7
2. 4. Start with Paging system on A32i phone.....	9
3. What to do if Broadcast system doesn't work.....	12

1. Introduction

1. 1. Overview

This document introduces Fanvil A32i phone's paging system use.

A32i phone is based on Android 9.0 system, it has built-in paging system, which user can add other Fanvil SIP terminals like paging gateway, door phone, or IP phone to work as A32i's clients and create different broadcast groups to make real-time broadcast, scheduled music broadcast, cycle music broadcast and so on. It is one practical and important feature, which helps user to create simple but useful broadcast system with lower cost in the LAN.

1. 2. Applicable Model

Paging System: A32i

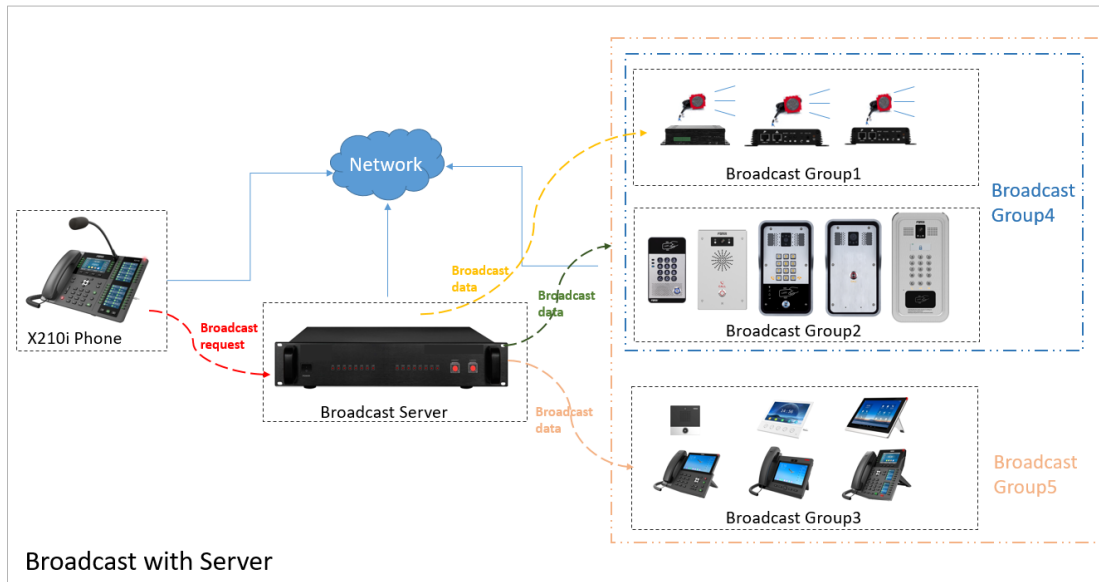
Paging Clients: All Fanvil products

1. 3. How the A32i Paging System Works

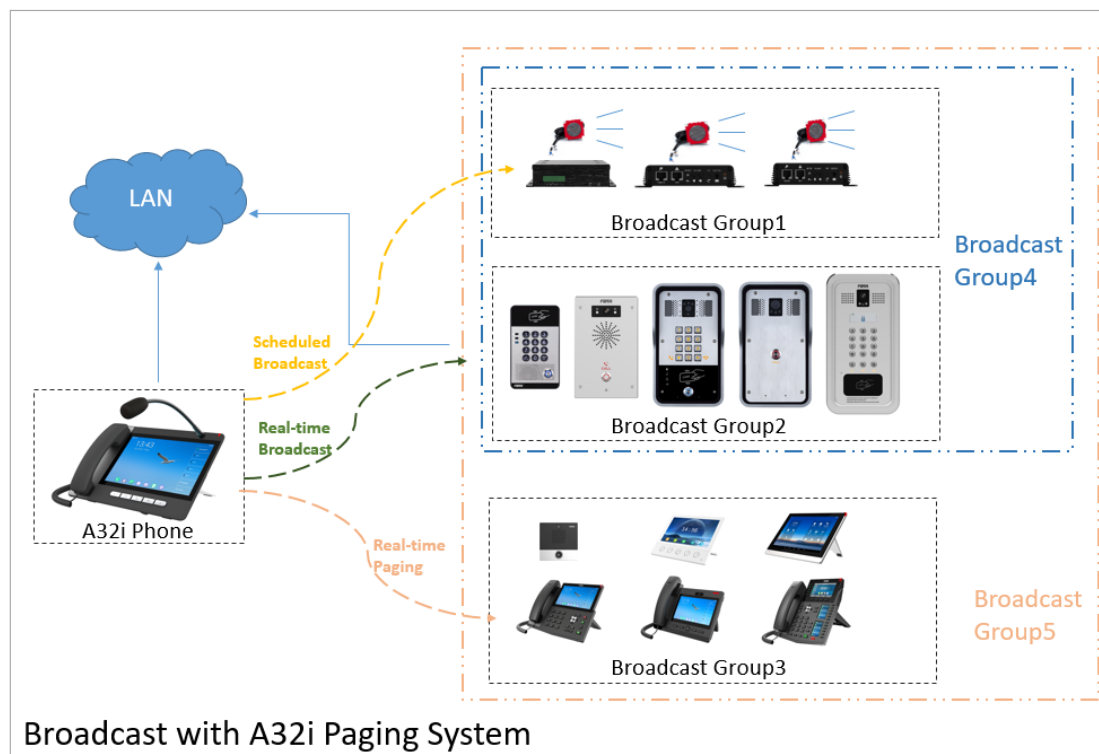
Usually, to make broadcast, we can work with broadcast server. All the SIP terminals like IP phones, paging gateways are registered to the SIP kind of broadcast server, and user can set up music broadcast group, real-time broadcast group, or emergency broadcast group, to make broadcast via the server based on their needs.

But with A32i phone, we can make broadcast without the broadcast server. All the SIP terminals and A32i must work in the same LAN, and SIP terminals are connected to A32i phone via SIP hotspot feature, then user can create different broadcast groups on A32i phone, and use it to make broadcast to each group based on their needs.

The working scheme of two kinds of broadcast are as following:



(Broadcast with Server)



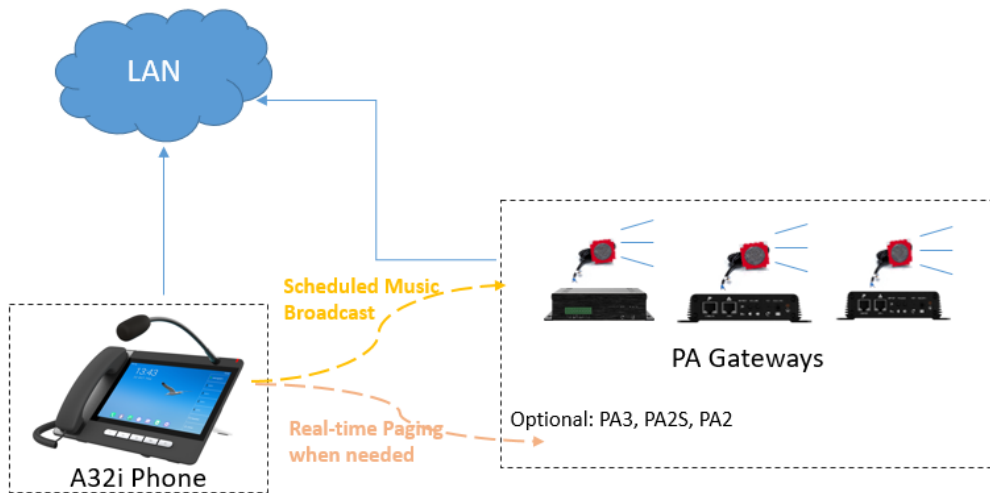
(Broadcast with A32i Phone)

1. 4. Example of A32i Paging System Use

Example1: In factory, customer can install PA gateway in each workshop and put A32i phone in operator room, and make music playing at scheduled time and make real-time paging if there is emergency needs.

Example2: In tunnel, customer can install PA gateway with A32i phone, use A32i to play

precautions to PA gateways time to time and play emergency notice when necessary.



1. 5. Before You Start

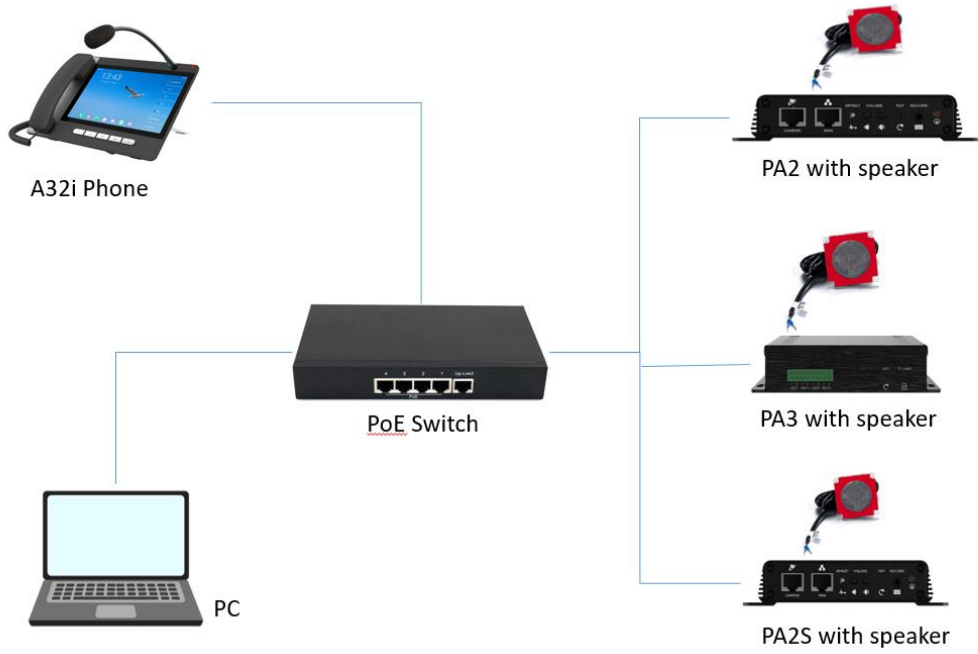
Step1.Prepare one A32i phone, PC and at least two Fanvil PA gateways or some other Fanvil products like IP phone or door phone or intercom;

Step2.Connect PA gateways, A32i phone and PC to the same PoE switch to get power and network connected;

Step3. Prepare some music files and put them into A32i phone;

Step4. Setup all these devices' network and make all of them in the same LAN.

1. 6. Connection Diagram



2. Operation Guide

To work with A32i phone's paging system, we need configurations on A32i side and broadcast devices. In this chapter, we will use one A32i phone as broadcast server(sender), one PA2, one i53W and one PA2S as broadcast clients(receivers) as example to show the configurations.

Generally speaking, to work with A32i phone's paging system, we need settings as below:

- 1) Setup sip hotspot feature on A32i phone;
- 2) Make PA2, i53W, and PA2S connected to A32i phone as sip hotspot clients;
- 3) Activate the SIP hotspot clients and allow Dial Without Registered on A32i phone;
- 4) Configure broadcast group on A32i phone's paging system and make broadcast test.

Detailed steps, please check following.

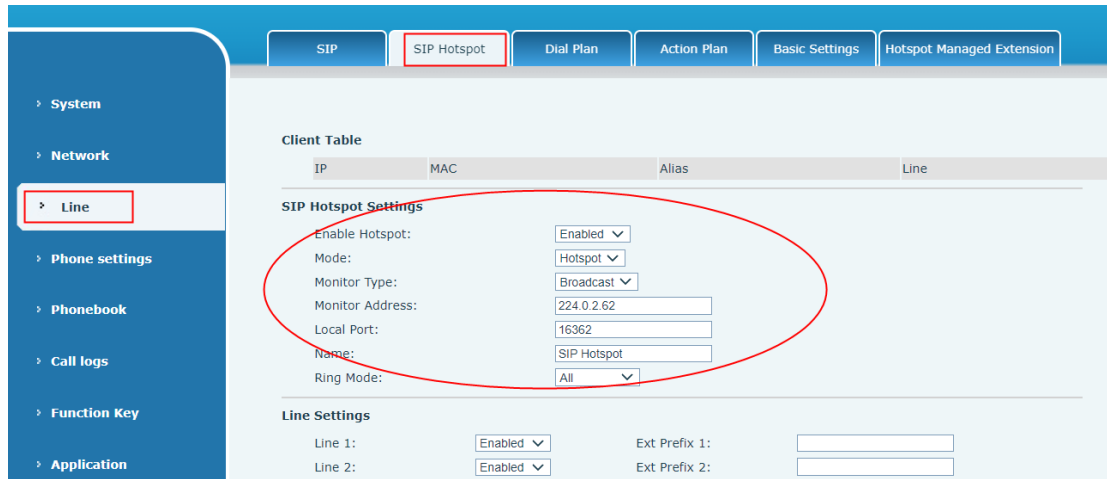
2. 1. Setup SIP hotspot on A32i Phone

Step1. Login A32i's webpage, go to Line→SIP page, add one fake one SIP account.

The screenshot shows the SIP configuration interface. The 'Line' dropdown is set to '1001@SIF'. Under 'Register Settings >>', the 'Line Status' is 'Inactive'. The 'Username' is '1001', 'Display name' is '1001', and 'Realm' is empty. The 'SIP Server 1' section has 'Server Address' as '172.18.1.45', 'Server Port' as '5060', and 'Transport Protocol' as 'UDP'. The 'SIP Server 2' section has 'Server Address' as empty, 'Server Port' as '5060', and 'Transport Protocol' as 'UDP'. The 'Registration Expiration' for both servers is '3600 (30~2147483647)second(s)'. There are also fields for 'Proxy Server Address', 'Proxy Server Port', 'Proxy User', and 'Proxy Password'. The 'Backup Proxy Server Address' and 'Backup Proxy Server Port' are also set to '5060'.

Input username, authentication user, display name, authentication password and server address, just like add one real SIP account on device, but without activating the line.

Step2. Go to A32i phone's Line→SIP Hotspot page, enable SIP hotspot feature, set it as SIP hotspot server and enter monitor address and port.



Enable Hotspot: select enable;

Mode: select Hotspot;

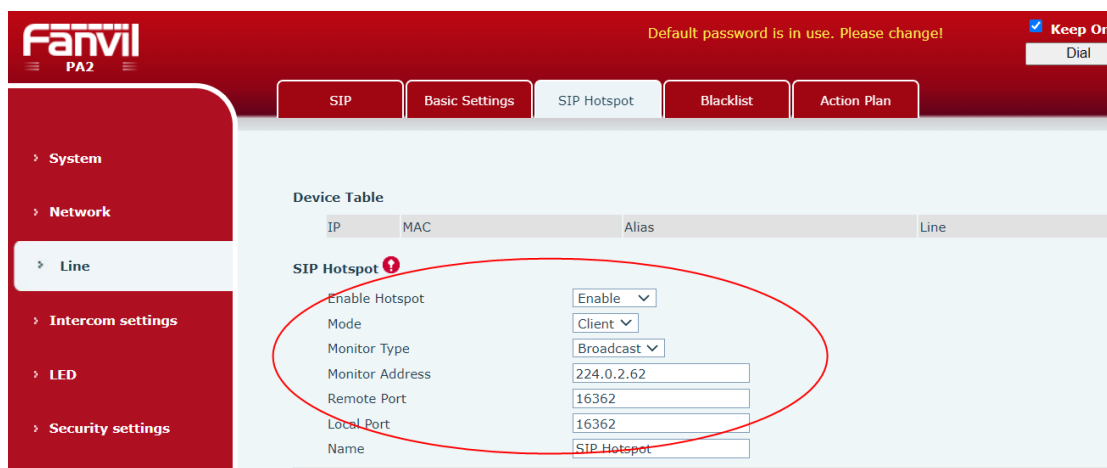
Monitor Type: either broadcast or multicast is OK, it only affects the connection messages between hotspot clients;

Monitor Address: input monitor address, its range is 224.0.0.0 to 239.255.255.255;

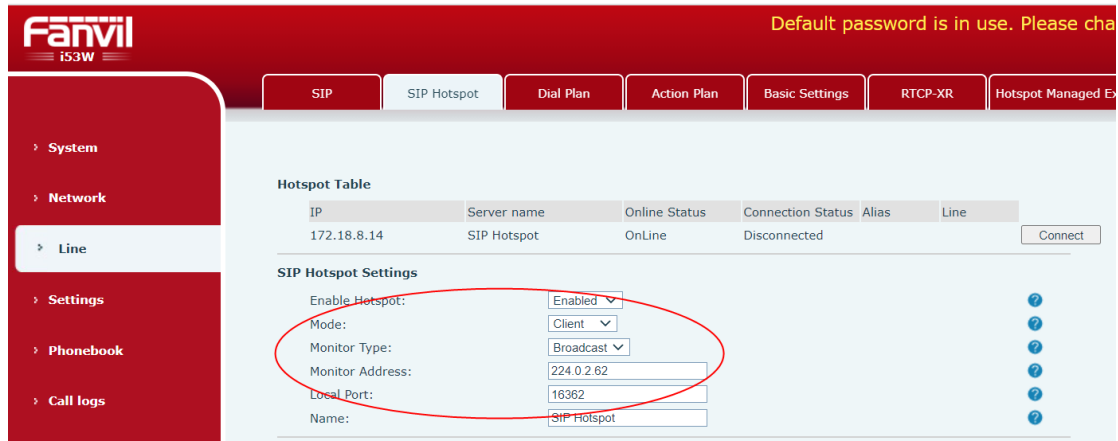
Local Port: input local port, its range is 0 to 65535, we recommend to work with port over 1024.

2. 2. Setup SIP hotspot on Broadcast Receivers

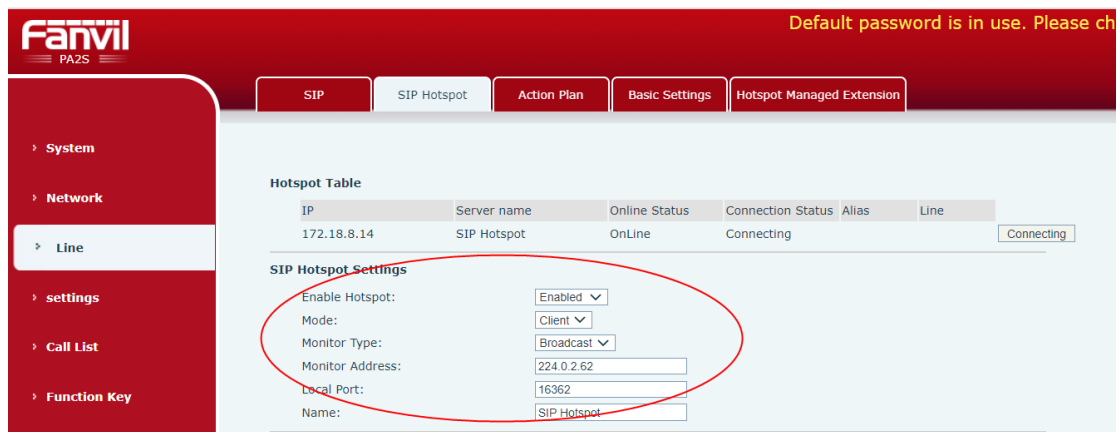
To configure the broadcast receivers, we just need go to its Line→SIP hotspot page, enable SIP hotspot feature and set it as client mode, and configure the same monitor address and port as A32i, then the devices will try to connect A32i.



(SIP Hotspot settings on PA2)



(SIP Hotspot settings on i53W)



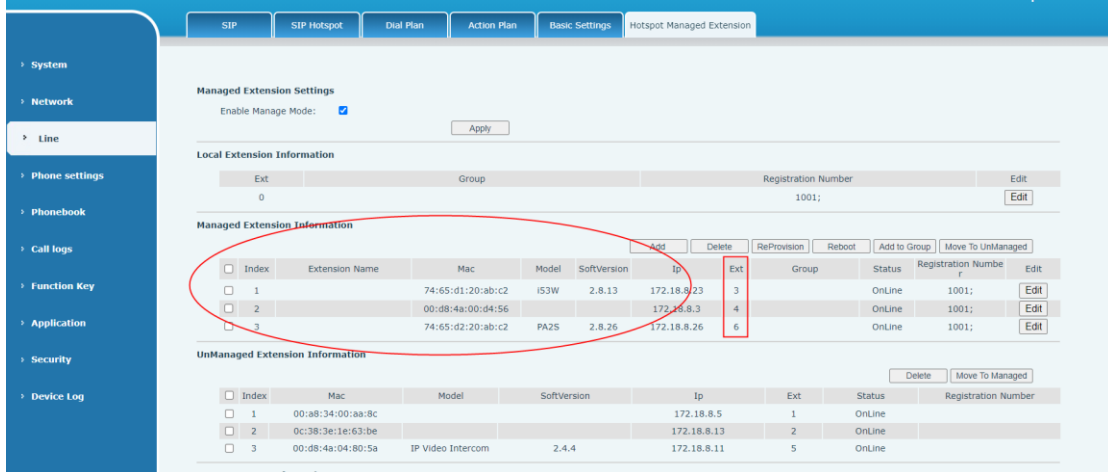
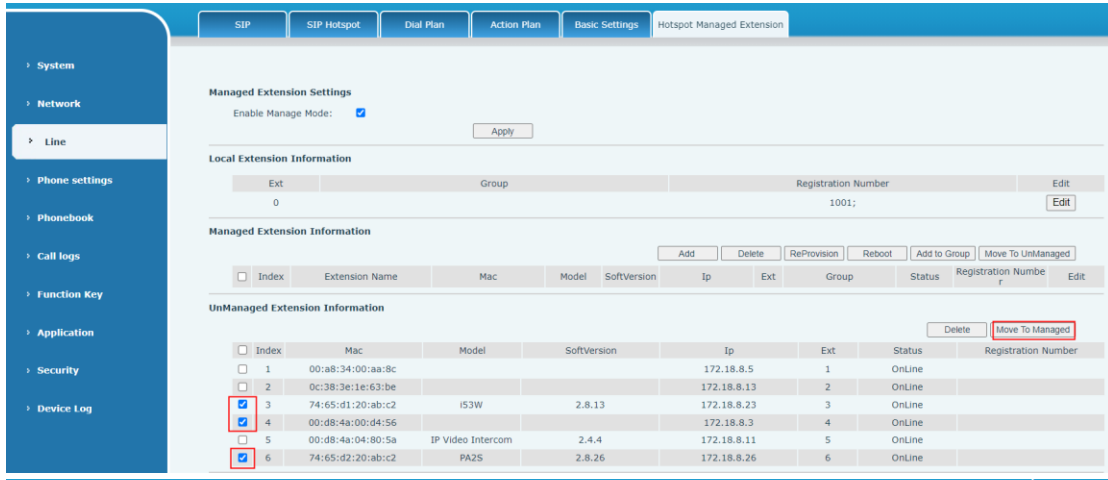
(SIP Hotspot settings on PA2S)

Notice: The SIP hotspot clients' monitor type, monitor address and local port must be the same as SIP hotspot's.

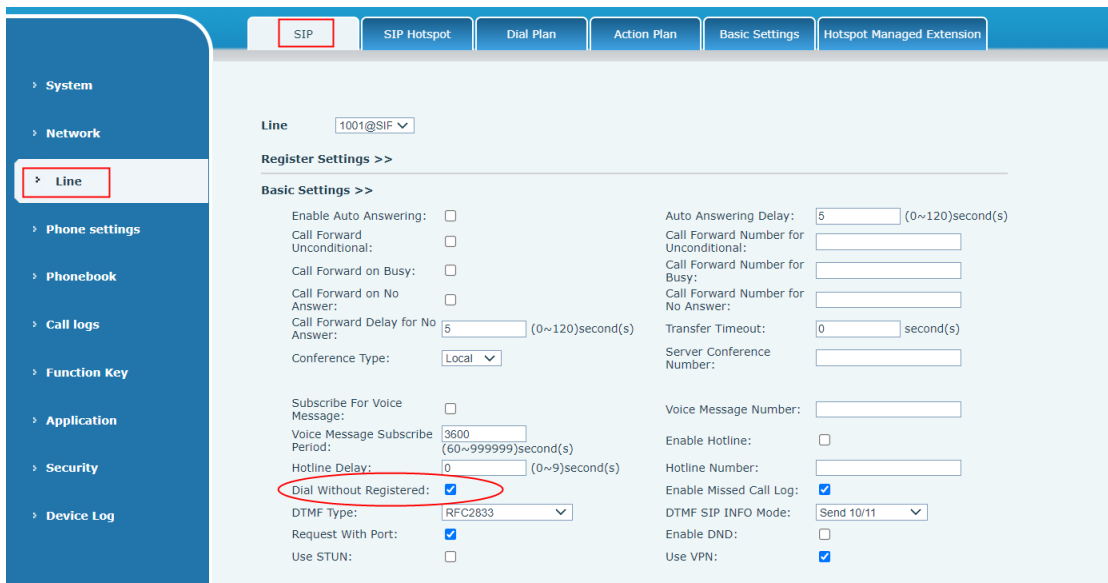
2. 3. Activate Hotspot Clients and Call Service on A32i phone

After we finish the settings in previous two chapters, the PA2, PA2S and i53W device will try to connect to A32i phone. In A32i's **Line**→**Hotspot Managed Extension** page, we can see those devices info, and in each device **Line**→**SIP Hotspot** page, we can also check its connection status.

But to work with A32i phone's Paging system, we need activate these clients first. Go to A32i's **Line**→**Hotspot Managed Extension** page, move the hotspot clients from unmanaged part to managed part, then the selected SIP hotspot clients will be online.



And then, in A32i phone's Line→SIP page, we need enable **Dial Without Registered**, so that we can start the Paging system use.



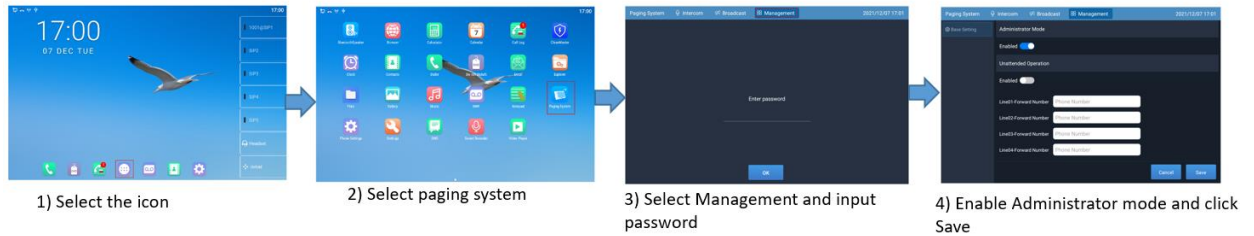
After finish these settings, we can use any SIP hotspot clients to call A32i by dialing 0, or call each other by dialing their extensions or use A32i to call these clients with their extensions.

Notice: More details on SIP hotspot, you may follow the introduction guide on SIP hotspot feature.

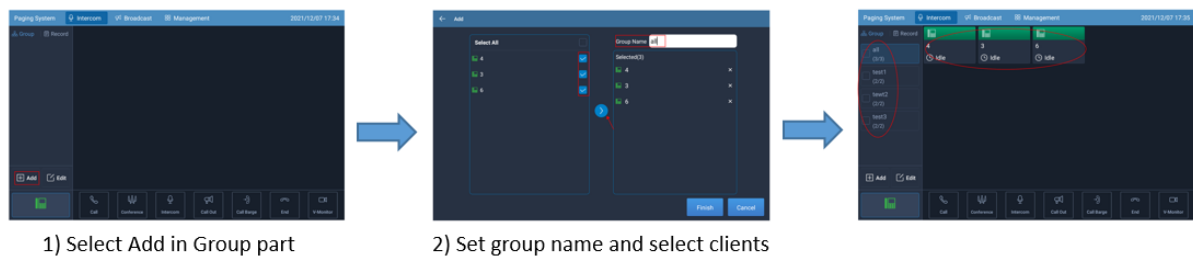
2. 4. Play with A32i's Paging System

To play with paging system of A32i phone, the operations are mainly on A32i's phone LCD. We can separate the SIP hotspot clients into different paging groups, and set scheduled music broadcast or make real-time paging or real-time music broadcast or cycle music broadcast, steps are as following:

Step1. Open Paging System APP and enable Administrator mode;

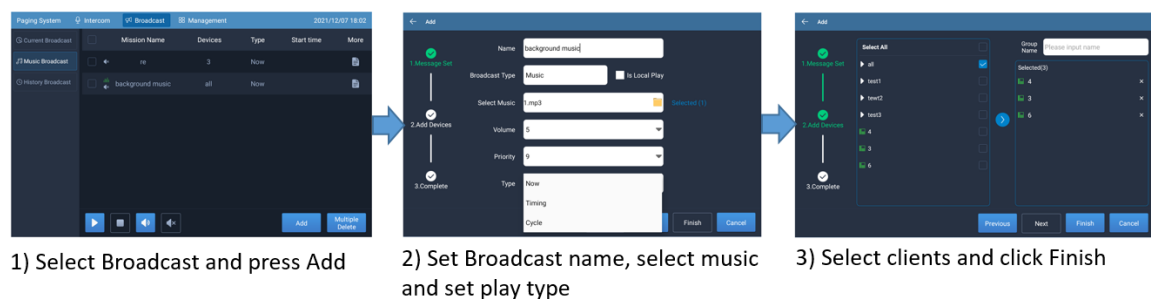


Step2. Add Paging group in Group column;



After add paging group and select the group name, you can check the group members, and you can select one or several clients to make a call, single intercom/paging, group conference, or group paging.

Step3. In Broadcast page, user can create different kinds of music broadcast, like scheduled music broadcast, real-time music broadcast and cycle music broadcast.



Name: set a name for this broadcast;

Is Local Play: enable or disable local play, if enable, A32i will play the music broadcast simultaneously while send the broadcast to group members;

Select Music: select the music file for this music broadcast;

Volume: set broadcast volume;

Priority: set priority for the broadcast, the larger the number is, the lower priority it is; call or

broadcast with higher priority can break broadcast with lower priority;

Type: there are three types, such as Now, Timing and Cycle.

Now: real-time music broadcast, when you finish configurations, A32i will play the specified music file to broadcast members immediately;

Timing: Scheduled music broadcast, which you still need configure **Start time** and **Stop time**, after you finish the settings, A32i will start the music broadcast at specified time and stop it automatically.

Cycle: Cycle scheduled broadcast, which you need select **cycle days** and configure **Start time**

and **Stop time**, then A32i will start the music broadcast at specified time at specified day.

Following step3, user can configure different broadcast groups based on their needs, and then A32i will play different broadcast to specified clients based on the settings.

Notice: With Cycle or Timing Type of music broadcast, please make sure A32i synchronizes time from time server correctly.

And in **Broadcast**→**Music Broadcast** page of A32i, user can select a broadcast to check or edit or stop to start it again.

Paging System Intercom Broadcast Management 2021/12/09 11:01					
Current Broadcast	Mission Name	Devices	Type	Start time	More
Music Broadcast	re	3	Now		
History Broadcast	background music	all	Now		
	break	3;6	Timing	11:01	

And in **Broadcast**→**Current Broadcast** page, user can check alive broadcast and in **Broadcast**→**History Broadcast**, user can check the played broadcast too.

3. What to do if Broadcast doesn't work

When work with A32i's broadcast system, user may fail to send broadcast. Please check step by step:

Step1. Check the network connection between A32i phone and its sip hotspot clients, make sure they work in the same LAN.

Step2. Check settings on A32i and sip hotspot clients, make sure these clients have connected to A32i phone successfully;

Step3. Check call between A32i phone and client, if it doesn't work, go back to step1 and step2;

Step4. Check the broadcast type and A32i's time, make sure your test is in specified time period;

Step5. Check the music file, to see if A32i is able to play the music file or not;

Step6. Prepare the upon info and contact Fanvil support team for further help.